



August 2024

HELLO!

If you are a new subscriber, we welcome you! If you missed past editions, scroll down to the bottom of this newsletter for the link to access the newsletter archive page!

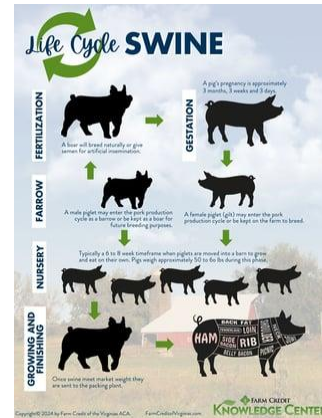
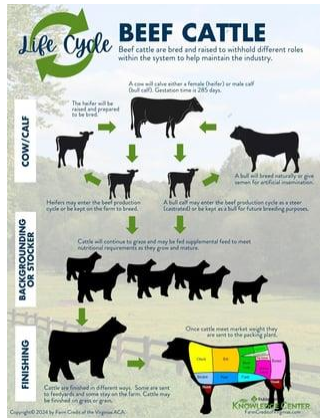
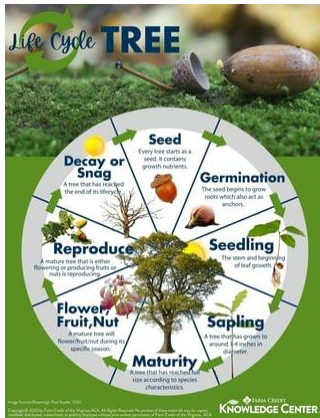
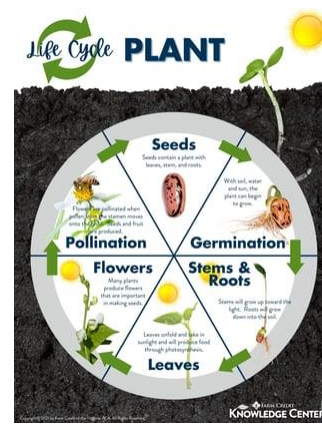
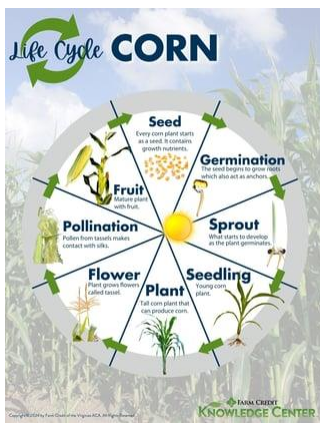


Just Released!

The Life Cycle Series has just been released! We want to thank everyone who participated in the life cycle topic survey from our last edition. After reviewing the results, we have created life cycle infographics, poster files, and activities based on the most requested topics.

We will continue to add more life cycles, starting with the honeybee. So, don't forget to bookmark the page and visit often for updates!

[Visit the Life Cycle Webpage](#)



Blog

Monocots and Dicots

Monocots and dicots classify flowering plants based on the number of cotyledons in a seed. Monocots have one cotyledon, while dicots have two. Learn more about the characteristics of the two with our latest blog article.

Add the following activities to your lesson and enhance student learning.

Student Activity

Monocot and Dicot Crossword [Key](#)

[Read Blog Article](#)



Resource Connection

Now that school is back in session, we wanted to remind you of our other series of resources! Don't forget to bookmark the webpages.



Everything But the...series of by-product resources

- Cattle
- Sheep
- Pigs
- Goats
- Chickens

Everything But the...

BREED SERIES



Breed Series resources

- Beef Cattle
- Dairy Cattle
- Wool & Hair Sheep
- Swine
- Meat & Fiber Goat
- Dairy Goat
- Poultry
- Rabbit

Breed Series




More Than Just the...products from plants

- Corn
- Wheat
- Soybean
- Cotton

More Than Just the...

We added to our AgBite Series!

Check out our latest additions, Sweet Potato and Peanut.

AgBite  **Did you know?**
So often in the U.S., we named Peanut, Potato, Carrot, and Sweet Potato after the state they were first grown in.

Overview
#1 source of commodity receipts

- There are 4 types of peanuts: Runner, Spanish, Valencia and Virginia.
- Approximately 540 peanuts are needed to make a 12 oz. jar of peanut butter.
- Majority of U.S. peanut production comes from Georgia, Alabama, Florida, North Carolina, Texas and South Carolina.
- George Washington Carver discovered over 300 uses for peanuts, including leather dye, ink, coffee and shaving cream.

Production
Approximately 2.2 billion pounds of peanuts are produced in the U.S. annually.
In 2022 the U.S. peanut crop was valued at \$1.57 billion.
Half of the peanuts produced in the U.S. are used for peanut butter. The other half is used for snack nuts and candy.

Peanut Plant Anatomy
Peanuts, unlike other nuts do not grow on trees. The peanut (the fruit) actually grows underground.

Nutritional Information 1 cup (160g)

Calories 878	Fat 72 g
Protein 38 g	Saturated 10 g
Carbs 24 g	Potassium 1079 mg
Sugar 6 g	Sodium 26 mg
Fiber 12 g	

Family: Fabaceae
Genus: Arachis
Kingdom: Plantae
Order: Fabales

FARM CREDIT KNOWLEDGE CENTER
Farm Credit Knowledge Center

AgBite  **Did you know?**
Despite its name, sweet potatoes aren't closely related to the potato, and they're different from yams.

Overview
#1 source of commodity receipts

- Sweet potato comes in varieties with skin and flesh color that range from white to yellow, orange and deep purple.
- Sweet potato is a valuable source of vitamins B, C and E, iron and zinc.
- Sweet potato (the root) leaves and shoots are also edible, and a good source of vitamins A, C and B.
- When properly stored or under proper conditions, it can be stored for several months. They may be frozen for up to one year before use.

Production
North Carolina is the top producer of sweet potatoes in the U.S.
More than 105 million metric tons of sweet potatoes are produced globally each year.
Worldwide, sweet potato is the 5th most important food crop after rice, wheat, potatoes, maize and cassava.

Sweet Potato Plant Anatomy
It takes 90 to 120 days for a sweet potato to grow.

Nutritional Information 1 cup (146g)

Calories 116	Fat 3 g
Protein 2.1 g	Saturated 0 g
Carbs 27 g	Potassium 488 mg
Sugar 6 g	Sodium 73 mg
Fiber 4 g	

Family: Convolvulaceae Juss.
Genus: Ipomoea L.
Kingdom: Plantae
Order: Solanales

FARM CREDIT KNOWLEDGE CENTER
Farm Credit Knowledge Center

AgBite - **Peanut**
Crossword Key

AgBite - **Sweet Potato**
Crossword Key

Were you forwarded this newsletter?

Click the button below for a brief description and to subscribe.

Subscribe to a Newsletter



The Farm Credit Knowledge Center is the educational arm of **Farm Credit of Virginias**. The mission of the Knowledge Center is to facilitate the sharing of knowledge and resources among all individuals interested in agriculture.



Farm Credit of the Virginias
102 Industry Way, Staunton, VA 24401
1-800-919-3276 (FARM)

Contact the Knowledge Center at KnowledgeCenter@FCVirginias.com
www.FarmCreditofVirginias.com
[Unsubscribe](#) [Manage Preferences](#)

