

[View in browser](#)



January 2025

HELLO,

If you are a new subscriber, we welcome you! If you missed past editions, scroll down to the bottom of this newsletter for the link to access the newsletter archive page!

Just Released! - AgBark: Series of Tree Insights

AgBark 
A series of tree insights

The logo for AgBark features the word "AgBark" in a large, bold, green, sans-serif font. To the right of the text is a stylized tree icon with a green canopy and a white trunk. Below the tree, the tagline "A series of tree insights" is written in a smaller, italicized, cursive font. A horizontal dotted line separates the tagline from the main text.

The wait is finally over! We are excited to announce the release of our new series, AgBark. This series offers insights into trees and includes fun facts, species overviews, historical information and agricultural uses. You

will explore these tree insights in an engaging and colorful way with our poster files, available in two sizes (8.5x11 inches and 24x36 inches), as well as crossword puzzles and answer keys.

Dive into the fascinating world of trees and gain valuable knowledge!

[Access AgBark Series](#)

AgBundles



AgBundles Resource Page

We have made it easier for you to access our expanding insight series: AgBites, AgBuds, and AgBarks. All resources from each series are now conveniently located in one place. We will continue to add to this collection, so be sure to bookmark the page and check back frequently.

[Visit the AgBundles Webpage](#)



Commodity Insights



Horticulture Insights



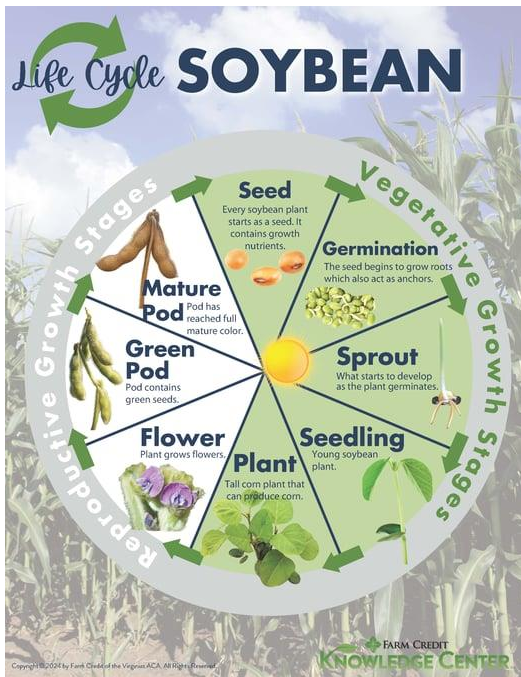
Tree Insights

Resource Connection

We've added to our collections! See our new additions below:

Soybean Life Cycle and Terminology

Goat Life Cycle and Terminology



Learn about the Spotted Lanternfly

The Spotted Lanternfly has become an increasing concern. As of today, 17 states have some degree of infestation. Learn more about the Spotted Lanternfly identification, associated plant damage, commonly asked questions, resources and more!

Read Blog on Spotted Lanternfly

Resource Guide

SPOTTED LANTERNFLY

SPOTTED LANTERNFLY DAMAGE

The spotted lanternfly damages plants in three ways:

1. Sucking out the sap and weakening the plant so that its yield is reduced.
2. Secreting "honeydew" which increases the occurrence of sooty mold that blocks sunlight and inhibits photosynthesis.
3. Stresses plants which allows other insects and pathogens to potentially damage and kill the plant.

IDENTIFYING THE SPOTTED LANTERNFLY

- Adults are approximately 1 inch in size.
- Greyish forewings marked with black spots and small brick-like markings near the wing tips.
- Hindwings are marked with distinct patches of red, white and black.
- Adults lay yellowish-brown egg masses that are covered with a gray, waxy coating.
- Immature stages of the insect are black with white spots, they eventually develop bright red patches as they near adulthood.
- Their preferred host is tree-of-heaven.
- Adults are present from mid-July until a hard frost in late fall. Adults start laying eggs in mid-September.

FREQUENTLY ASKED QUESTIONS

- Q: How can I reduce the number of spotted lanternfly on my property?
A: Removing tree-of-heaven from your property is vital in reducing populations.
- Q: What is a quick and easy way to kill spotted lanternfly around my house?
A: Spray spotted lanternfly with a solution of 10% dish soap and 90% water.
- Q: Will spotted lanternfly harm my pets?
A: No, spotted lanternfly poses no known harm to pets or humans.
- Q: Will the spotted lanternfly kill my fruit trees and vegetable garden?
A: While it's possible, it's unlikely that spotted lanternfly will feed enough to kill your fruit trees and the majority of common vegetable crops.

Sources: WVDA, WVU Extension, VDMCS

FARM CREDIT KNOWLEDGE CENTER www.FarmCreditofVirginia.com
Copyright © 2024 by Farm Credit of the Virginia ACA.



STATE SPECIFIC RESOURCES

West Virginia

- West Virginia Department of Agriculture
- WVU Extension
- If you have a sighting of spotted lanternfly please report it to the WVDA bugbusters detection email at bugbusters@wvda.wv.gov. If you can, please, include a photo of the insect before trying to kill it. In the email include as much detail about the location, date and insect activity.

Virginia

- Virginia Department of Agriculture and Consumer Services
- Virginia Tech
- Contact and Reporting
 - Invasive Species Reporting Tool
 - Email spottedlanternfly@odacs.virginia.gov

Maryland

- Maryland Department of Agriculture
- University of Maryland Extension
- Report a Spotted Lanternfly Sighting in Maryland

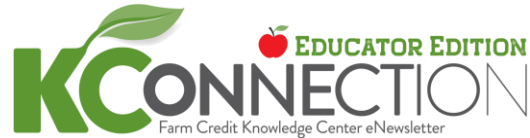
10-2024

FARM CREDIT KNOWLEDGE CENTER www.FarmCreditofVirginia.com FARM CREDIT
Copyright © 2024 by Farm Credit of the Virginia ACA.

Were you forwarded this newsletter?

Click the button below for a brief description and to subscribe.

[Subscribe to a Newsletter](#)



The Farm Credit Knowledge Center is the educational arm of [Farm Credit of Virginias](#). The mission of the Knowledge Center is to facilitate the sharing of knowledge and resources among all individuals interested in agriculture.



Farm Credit of the Virginias
102 Industry Way, Staunton, VA 24401
1-800-919-3276 (FARM)

Contact the Knowledge Center at KnowledgeCenter@FCVirginias.com

www.FarmCreditofVirginias.com

[Unsubscribe](#) [Manage Preferences](#)