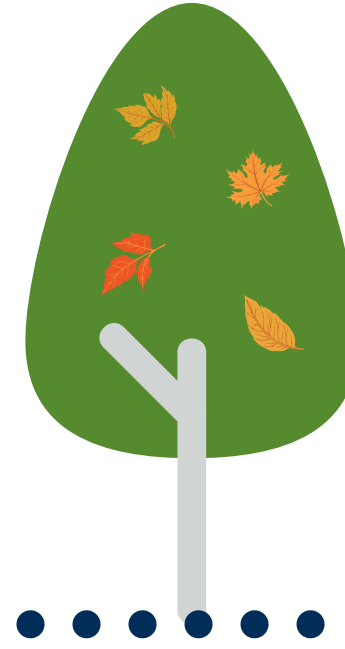


# AgBark



A series of tree insights

*Did you know?*

More states have claimed the Sugar Maple as their state tree than any other single species.

## Overview

- The Sugar Maple is the state tree of four US States. West Virginia, New York, Vermont and Wisconsin.
- Sugar Maples are commonly browsed by white-tailed deer, moose and snowshoe hare. Squirrels feed on the seeds, buds, twigs and leaves.
- The Sugar Maple is commercially planted for its delicious syrup and value as lumber.

## Tree Details

Mature Height  
60' - 75'

Growth Speed  
Slow to  
Medium

Shape  
Oval

Mature Spread  
40' - 50'

# Sugar Maple

**Kingdom:** *Plantae*

**Class:** *Magnoliophyta*

**Order:** *Sapindales*

**Family:** *Sapindaceae*

**Genus:** *Acer*

## Sugar Maples in Agriculture

- Maple syrup production - It takes 40 gallons of sap to produce one gallon of pure maple syrup.
- In 2021, the U.S. produced approximately 4.2 million gallons of maple syrup, with a producer value around \$150 million annually.
- The maple syrup industry supports numerous jobs in rural communities, including those involved in tapping and processing.

## History

- John Smith was among the first settlers who remarked about the Native Americans' sugar processing and the fact that they used the product for barter.
- Other historic uses included making soap from its ashes, using the bark as a dye, drinking the sap as a spring tonic and taking the syrup for liver and kidney problems.

Sources:  
<https://www.invasive.org/browse/subinfo.cfm?sub=3249>  
<https://shop.arborday.org/treeguide/340>  
Farm Credit East

Copyright© 2024 by Farm Credit of the Virginias ACA.

FARM CREDIT  
KNOWLEDGE CENTER

[www.FarmCreditofVirginias.com/Knowledge-Center](http://www.FarmCreditofVirginias.com/Knowledge-Center)