

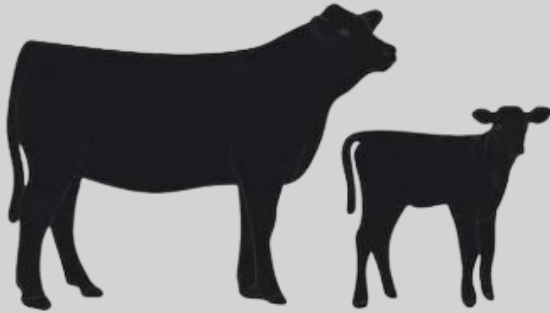
# BEEF CATTLE PRODUCTION

## General Categories



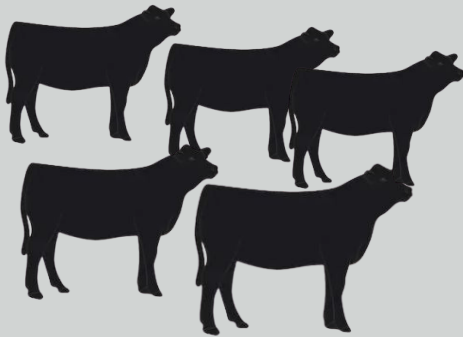
The beef cattle production system can be divided into three general categories. Beef cattle will move through different stages within the system depending on where they are in their lifecycle.

### COW/CALF



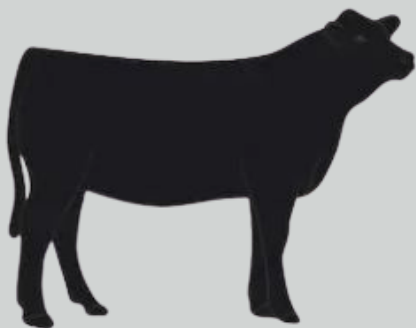
Cow/calf farms or ranches will own a herd of cows that give birth once a year. The calves are kept with their mothers over several months, feeding on milk and grazing on pasture.

### BACKGROUNDING OR STOCKER



After being weaned, the calves will continue to graze on pasture and may also receive supplemental feed to help it grow and mature.

### FINISHING



Cattle may move to a feedyard or stay on the farm. Here they will continue to be fed roughage and grain in order to meet its nutritional requirements. Cattle may be finished on grass or grain. After 4-6 months and when market weight is met, they are ready for harvest.